

I N S T R U C T I O N S

#280c 944 light kit Installation Instructions



After you remove your original head lights and movement mechanism, you are ready to install the GT Racing headlight conversion kit #280c.

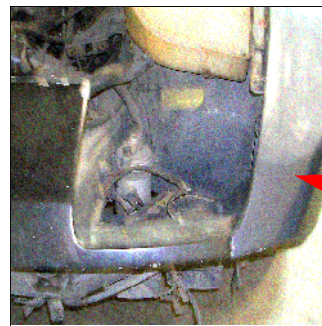
Align the mounting brackets with the 3 mounting holes, as shown at right. Use fasteners to mount bucket, see #1, #2, #3.

Now you are ready to mount and align the #280 clear headlight cover to the bucket. Align the clear lens to match the fender and nose panels.

Mark and drill. Fasten the clear lens to the front fastener and to the two rear fasteners.

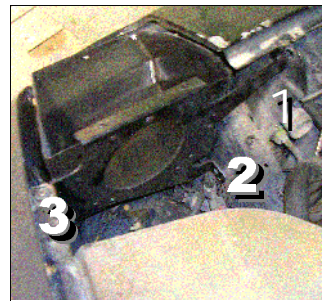


Finished bucket, lights & clear headlight cover



mechanism removed

First remove original lights and movement mechanism.



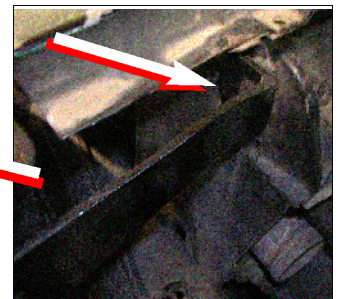
mounting holes



bucket front



bottom fastener



top fastener



bucket installed

